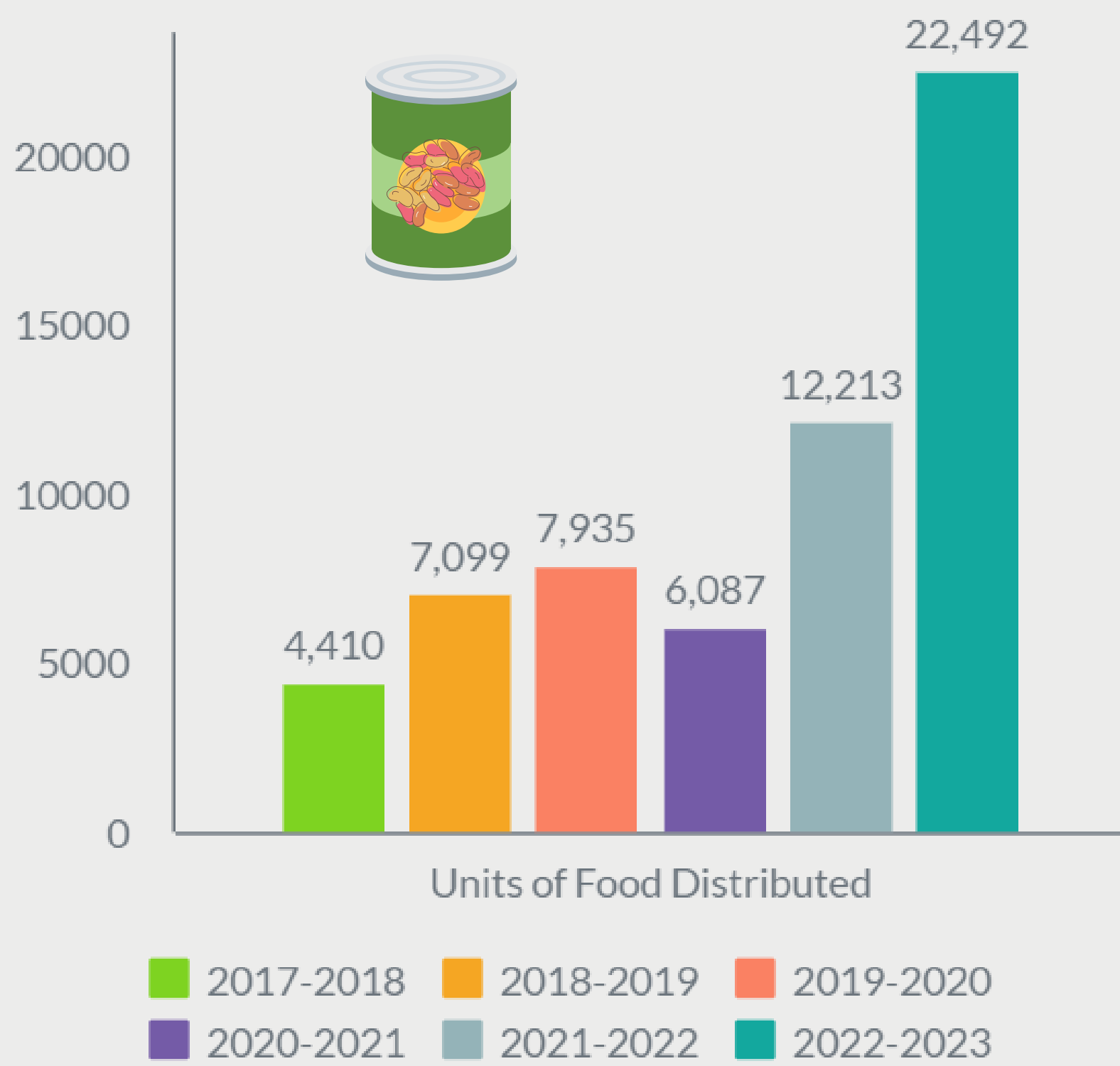




# Magic Food Bus FAST STATS

## Units of Food Distributed



Units of Food  
**84%**  
From 21-22  
Academic Year



**64,437**  
units of food distributed  
since 2016

## Busiest Day

•April 18, 2023•

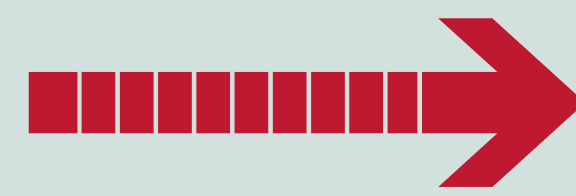
**27**

**shoppers**

## During 2022-23, we served:



**984**



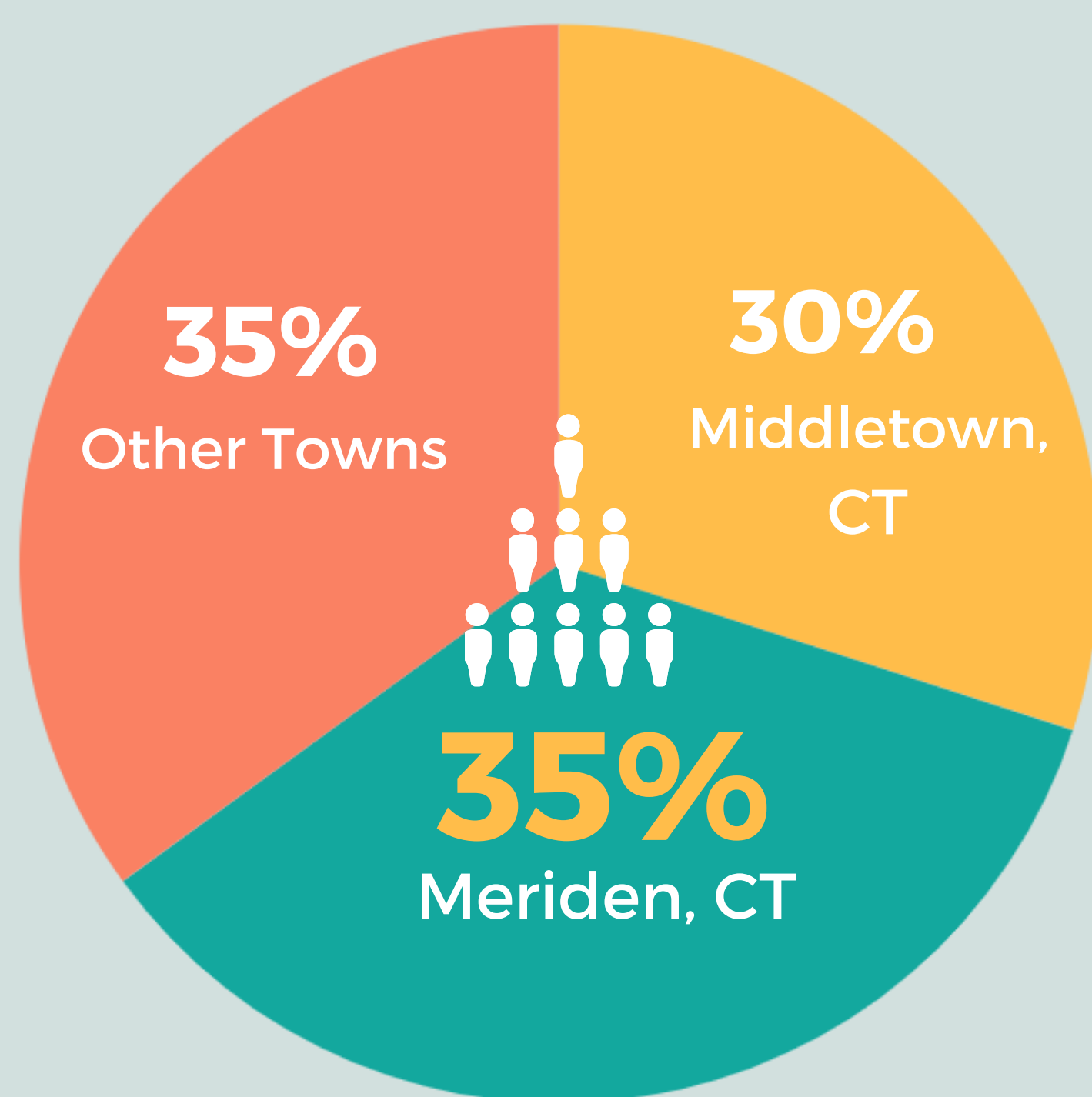
We served



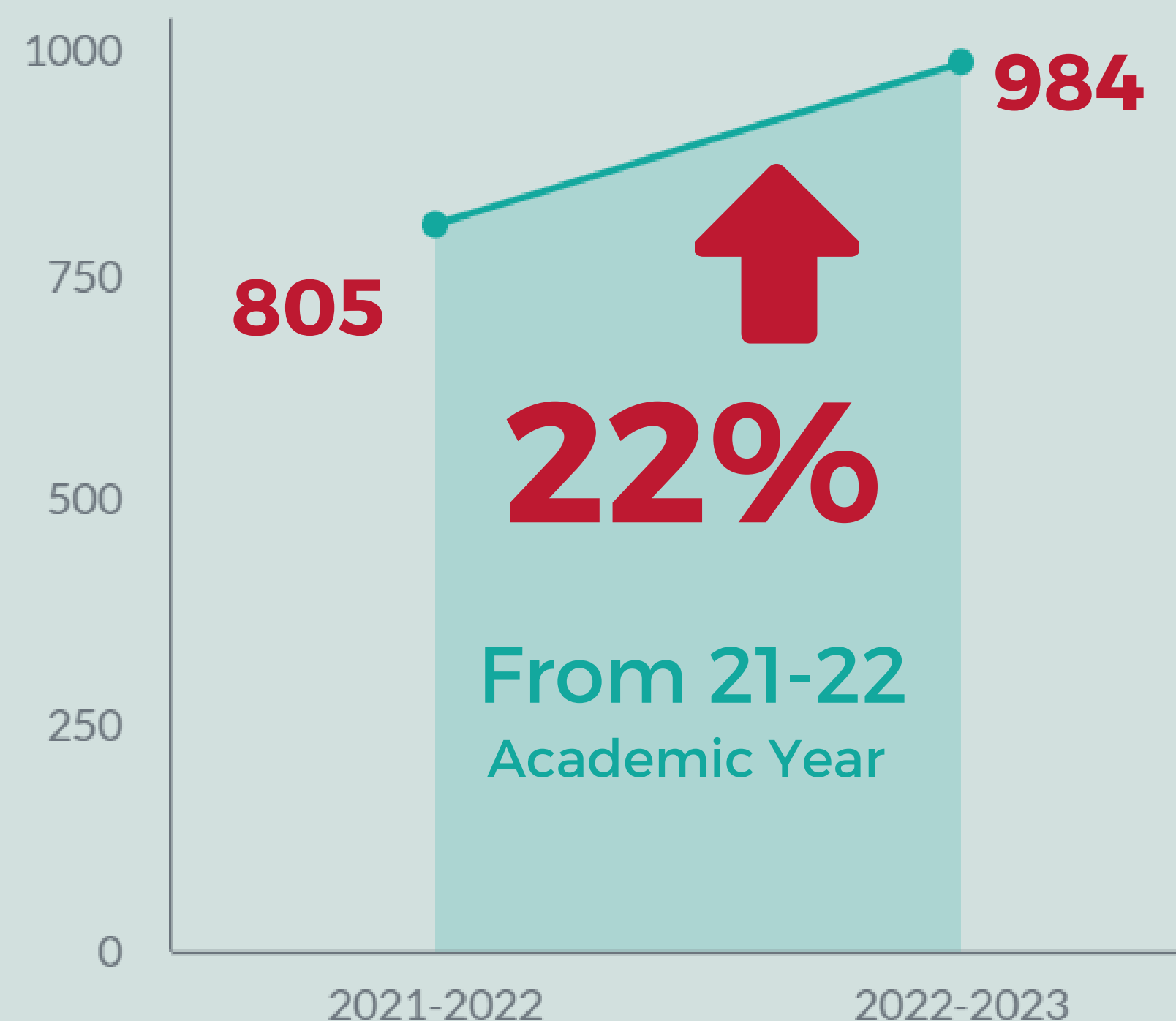
**7,932**

students and family  
members since  
2016

students & their families from  
**38 communities.**



(2022-2023)



**22%**

From 21-22  
Academic Year

■ Students & Their Families

The Magic Food Bus (MFB) is funded in part through grants from the Community Foundation of Middlesex County, CUNO Foundation, and from the City of Middletown and Meriden Community Development Block Grant Programs. The MFB also receives support from Connecticut Foodshare, MxCC faculty, staff, and friends. Statistics are unduplicated.